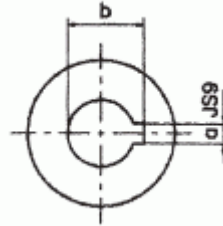
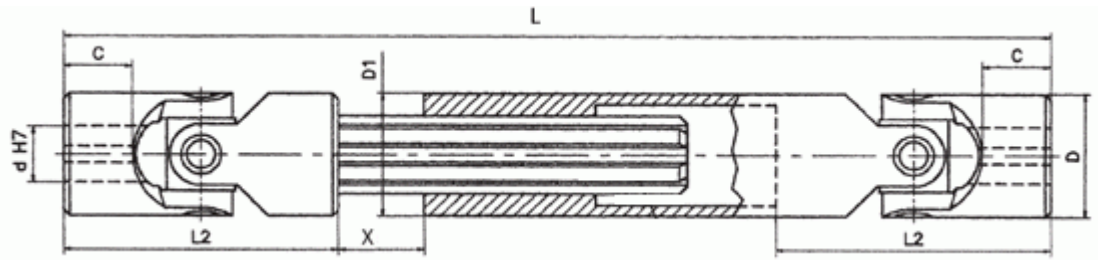
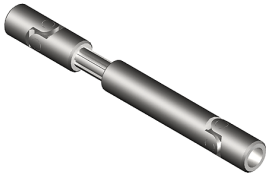




## Universal Joint (Telescopic), Plain bearings, Heavy Duty, Series G, DIN808-G



Order no.	d (mm)	D (mm)	L2 (mm)	C (mm)	Lmin (mm)	Lmax (mm)	X (mm)	a (mm)	b (mm)	Spline shaft profile	D1 (mm)	Weight (kg)
03GA1	10	22	48	12	140	170	30	3	11.4	6 x 11 x 14	22	0.31
03GA15	10	22	48	12	160	200	40	3	11.4	6 x 11 x 14	22	0.36
03GA2	10	22	48	12	180	240	60	3	11.4	6 x 11 x 14	22	0.38
03GA25	10	22	48	12	230	330	100	3	11.4	6 x 11 x 14	22	0.5
04GA1	12	25	56	13	160	190	30	4	13.8	6 x 13 x 16	26	0.5
04GA15	12	25	56	13	180	225	45	4	13.8	6 x 13 x 16	26	0.56
04GA2	12	25	56	13	200	270	70	4	13.8	6 x 13 x 16	26	0.62
04GA23	12	25	56	13	220	300	80	4	13.8	6 x 13 x 16	26	0.67
04GA26	12	25	56	13	250	355	105	4	13.8	6 x 13 x 16	26	0.76
04GA29	12	25	56	13	280	420	140	4	13.8	6 x 13 x 16	26	0.84
04GA32	12	25	56	13	300	450	150	4	13.8	6 x 13 x 16	26	0.9
05GA1	14	28	60	14	170	200	30	5	16.3	6 x 13 x 16	29	0.62
05GA15	14	28	60	14	180	220	40	5	16.3	6 x 13 x 16	29	0.64
05GA18	14	28	60	14	200	260	60	5	16.3	6 x 13 x 16	29	0.72
05GA2	14	28	60	14	220	300	80	5	16.3	6 x 13 x 16	29	0.78
05GA23	14	28	60	14	250	350	100	5	16.3	6 x 13 x 16	29	0.87
05GA26	14	28	60	14	280	420	140	5	16.3	6 x 13 x 16	29	0.96
05GA29	14	28	60	14	300	450	150	5	16.3	6 x 13 x 16	29	1.03
05GA32	14	28	60	14	350	550	200	5	16.3	6 x 13 x 16	29	1.17
05GA35	14	28	60	14	400	650	250	5	16.3	6 x 13 x 16	29	1.33

**HEC Engineering Components Limited**

Tel: 0086-571-28809660

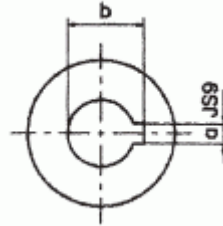
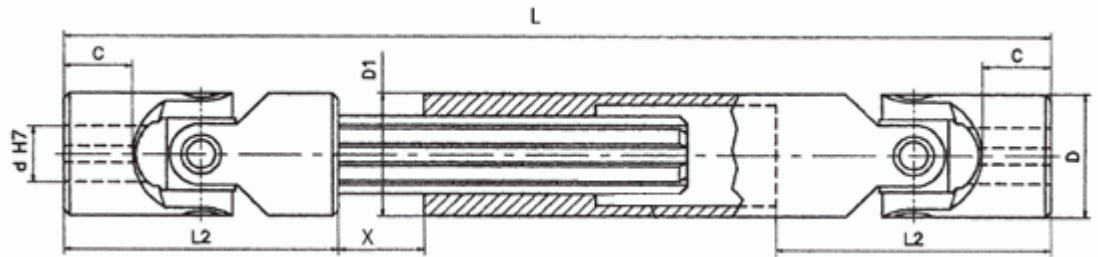
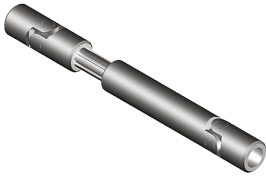
Fax: 0086-571-28809669

Website: [www.hzhec.com](http://www.hzhec.com)

E-mail: [hecsales@vip.163.com](mailto:hecsales@vip.163.com)



## Universal Joint (Telescopic), Plain bearings, Heavy Duty, Series G, DIN808-G



Order no.	d (mm)	D (mm)	L2 (mm)	C (mm)	Lmin (mm)	Lmax (mm)	X (mm)	a (mm)	b (mm)	Spline shaft profile	D1 (mm)	Weight (kg)
1GA1	16	32	68	16	190	220	30	5	18.3	6 x 16 x 20	32	0.9
1GA15	16	32	68	16	210	250	40	5	18.3	6 x 16 x 20	32	0.98
1GA2	16	32	68	16	240	320	80	5	18.3	6 x 16 x 20	32	1.1
1GA23	16	32	68	16	250	350	100	5	18.3	6 x 16 x 20	32	1.14
1GA26	16	32	68	16	275	390	115	5	18.3	6 x 16 x 20	32	1.24
1GA29	16	32	68	16	300	430	130	5	18.3	6 x 16 x 20	32	1.33
1GA32	16	32	68	16	380	590	210	5	18.3	6 x 16 x 20	32	1.6
1GA35	16	32	68	16	400	630	230	5	18.3	6 x 16 x 20	32	1.73
2GA1	18	36	74	17	230	280	50	6	20.8	6 x 18 x 22	37	1.35
2GA15	18	36	74	17	250	320	70	6	20.8	6 x 18 x 22	37	1.46
2GA18	18	36	74	17	270	370	100	6	20.8	6 x 18 x 22	37	1.55
2GA2	18	36	74	17	290	400	110	6	20.8	6 x 18 x 22	37	1.66
2GA23	18	36	74	17	300	415	115	6	20.8	6 x 18 x 22	37	1.71
2GA26	18	36	74	17	400	620	220	6	20.8	6 x 18 x 22	37	2.23
2GA29	18	36	74	17	500	820	320	6	20.8	6 x 18 x 22	37	2.75
3GA1	20	42	82	18	250	300	50	6	22.8	6 x 21 x 25	42	1.99
3GA15	20	42	82	18	270	340	70	6	22.8	6 x 21 x 25	42	2.12
3GA18	20	42	82	18	290	380	90	6	22.8	6 x 21 x 25	42	2.25
3GA2	20	42	82	18	320	440	120	6	22.8	6 x 21 x 25	42	2.46
3GA23	20	42	82	18	380	560	180	6	22.8	6 x 21 x 25	42	2.86
3GA26	20	42	82	18	420	640	220	6	22.8	6 x 21 x 25	42	3.13
3GA29	20	42	82	18	500	800	300	6	22.8	6 x 21 x 25	42	3.66
4GA05	22	45	95	22	250	280	30	6	24.8	6 x 23 x 28	47	2.35

**HEC Engineering Components Limited**

Tel: 0086-571-28809660

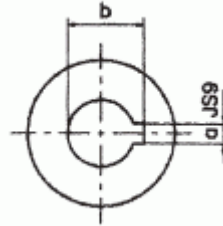
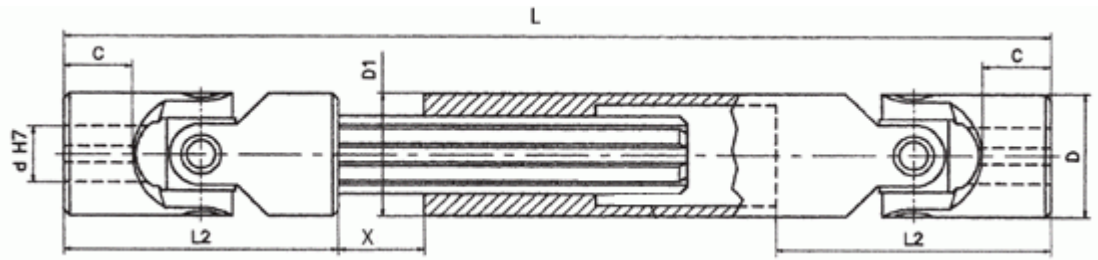
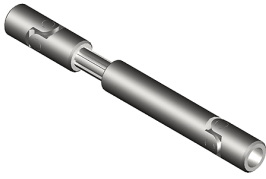
Fax: 0086-571-28809669

Website: [www.hzhec.com](http://www.hzhec.com)

E-mail: [hecsales@vip.163.com](mailto:hecsales@vip.163.com)



## Universal Joint (Telescopic), Plain bearings, Heavy Duty, Series G, DIN808-G



Order no.	d (mm)	D (mm)	L2 (mm)	C (mm)	Lmin (mm)	Lmax (mm)	X (mm)	a (mm)	b (mm)	Spline shaft profile	D1 (mm)	Weight (kg)
4GA1	22	45	95	22	270	320	50	6	24.8	6 x 23 x 28	47	2.51
4GA15	22	45	95	22	290	350	60	6	24.8	6 x 23 x 28	47	2.67
4GA2	22	45	95	22	330	430	100	6	24.8	6 x 23 x 28	47	3
4GA23	22	45	95	22	350	470	120	6	24.8	6 x 23 x 28	47	3.16
4GA26	22	45	95	22	470	710	240	6	24.8	6 x 23 x 28	47	4.13
5GA1	25	50	108	26	295	345	50	8	28.3	6 x 26 x 32	52	3.39
5GA15	25	50	108	26	310	375	65	8	28.3	6 x 26 x 32	52	3.52
5GA2	25	50	108	26	350	450	100	8	28.3	6 x 26 x 32	52	3.92
5GA23	25	50	108	26	380	500	120	8	28.3	6 x 26 x 32	52	4.2
5GA26	25	50	108	26	420	590	170	8	28.3	6 x 26 x 32	52	4.59
5GA29	25	50	108	26	460	660	200	8	28.3	6 x 26 x 32	52	4.98
5GA32	25	50	108	26	500	745	245	8	28.3	6 x 26 x 32	52	5.37
6GA1	30	58	122	29	330	380	50	8	33.3	8 x 32 x 38	58	4.9
6GA15	30	58	122	29	350	420	70	8	33.3	8 x 32 x 38	58	5.17
6GA18	30	58	122	29	370	455	85	8	33.3	8 x 32 x 38	58	5.42
6GA2	30	58	122	29	400	510	110	8	33.3	8 x 32 x 38	58	5.85
6GA23	30	58	122	29	450	620	170	8	33.3	8 x 32 x 38	58	6.48
6GA26	30	58	122	29	500	720	220	8	33.3	8 x 32 x 38	58	7.14
6GA29	30	58	122	29	540	795	225	8	33.3	8 x 32 x 38	58	7.69

### HEC Engineering Components Limited

Tel: 0086-571-28809660      Fax: 0086-571-28809669  
 Website: www.hzhec.com      E-mail: hecsales@vip.163.com